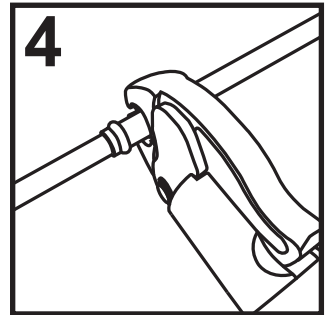
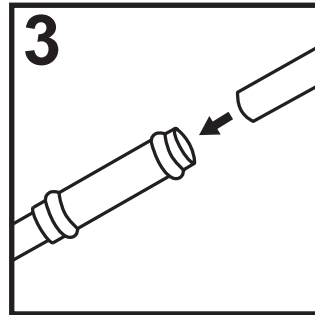
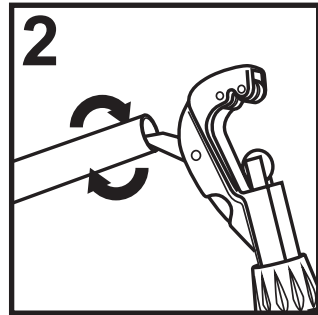
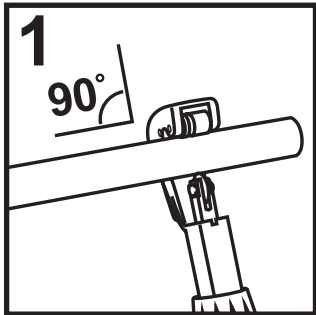


INSTALLATION INSTRUCTIONS



IMPORTANT

**COPPER PIPE MUST BE TYPE A OR TYPE B COMPLIANT WITH AS1432
THIS PRODUCT MUST BE INSTALLED BY A LICENSED PLUMBER
THIS PRODUCT IS SUITABLE FOR USE WITH WATER ONLY**

Maximum operating pressure: PN16

Maximum operating temperature: 95 Degrees Celsius

1. Cut the pipe square at 90° using an appropriate cutting tool. It is important that the pipe is cut completely square. Ensure the pipe end is free from any defects or deformities.
2. Remove/deburr any rough edges from the inside and outside of the pipe end.
3. Inspect the inside of the press fitting to ensure the O-ring is seated correctly and free of any damage, dust or debris. Push the pipe into the fitting until it hits the tube stop. Mark the pipe to ensure that any movement is detected prior to pressing.
Note: Straight couplings do not have a tube stop. Mark the insertion depth (see table below) onto the pipe and insert into the fitting ensuring the mark is visible when pressing.
4. Using an approved press tool* with the correct sized jaws, place the jaws over the fitting ensuring it is aligned correctly. Activate the tool and make sure that it completes the cycle and the jaws fully close. If the tool did not press the fitting correctly, the fitting should be cut out and replaced. Do not press a joint more than once. Refer to the press tool instructions for proper usage and other information.
5. Test the system and check all joints for leaks. Final testing should be conducted in accordance with AS/NZS 3500 and any other local regulations or requirements.

* Approved press tools: Novopress, Milwaukee, Viega, Rothenberger, Ridgid, KemPress. Other tools may be approved upon application to Smartex. Press tools must be serviced, maintained and calibrated as per manufacturer's instructions.

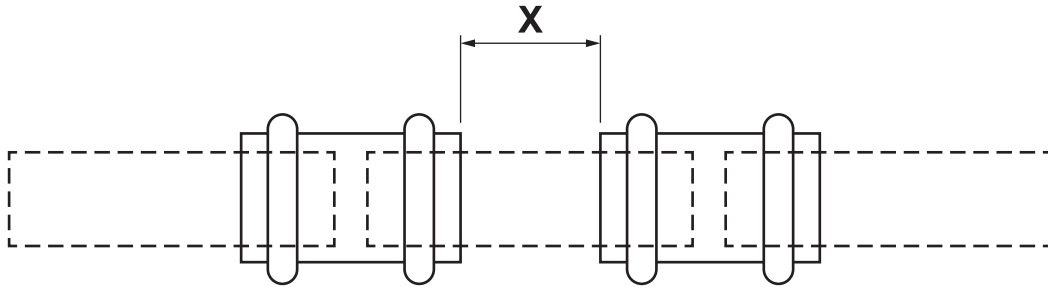
Pipe Size	Insertion Depth
1/2" (DN15)	20mm
3/4" (DN20)	25mm
1" (DN25)	25mm

DESIGN CONSIDERATIONS

DISTANCE BETWEEN FITTINGS

There must be a minimum distance between fittings to ensure that the integrity of either joint is not compromised. Non-compliance will void warranty.

Pipe Size	Minimum Distance (X)
1/2" (DN15)	10mm
3/4" (DN20)	10mm
1" (DN25)	10mm



BRAZING NEAR FITTINGS

Brazing or soldering near press fittings should be avoided as heat transfer may cause damage to the O-rings. The table below states the minimum acceptable distance from the fitting. If this distance cannot be maintained then further precautions must be taken, such as separately pre-fabricating sections or wrapping with a wet cloth, to prevent heat transfer to the press fittings during brazing.

Pipe Size	Minimum Distance
1/2" (DN15)	400mm
3/4" (DN20)	600mm
1" (DN25)	800mm

WARRANTY

All SmarteX-PRESS fittings are covered by a 25 year warranty against manufacturing defects. This warranty does not cover incorrect installation or damage caused by a fault from other branded products in the same system. This warranty does not cover installation with non-approved press tools, installation with non-compliant copper tube, or installation by a non-licensed plumber. Installation is subject to the requirements of the applicable regulatory authority, the National Construction Code (Volume 3 - Plumbing Code of Australia), associated reference standards as applicable at the time, and AS3688.

Please visit www.smartex.com.au for the latest product and warranty information.